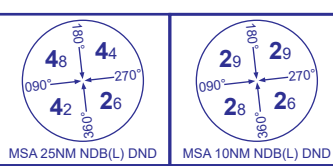


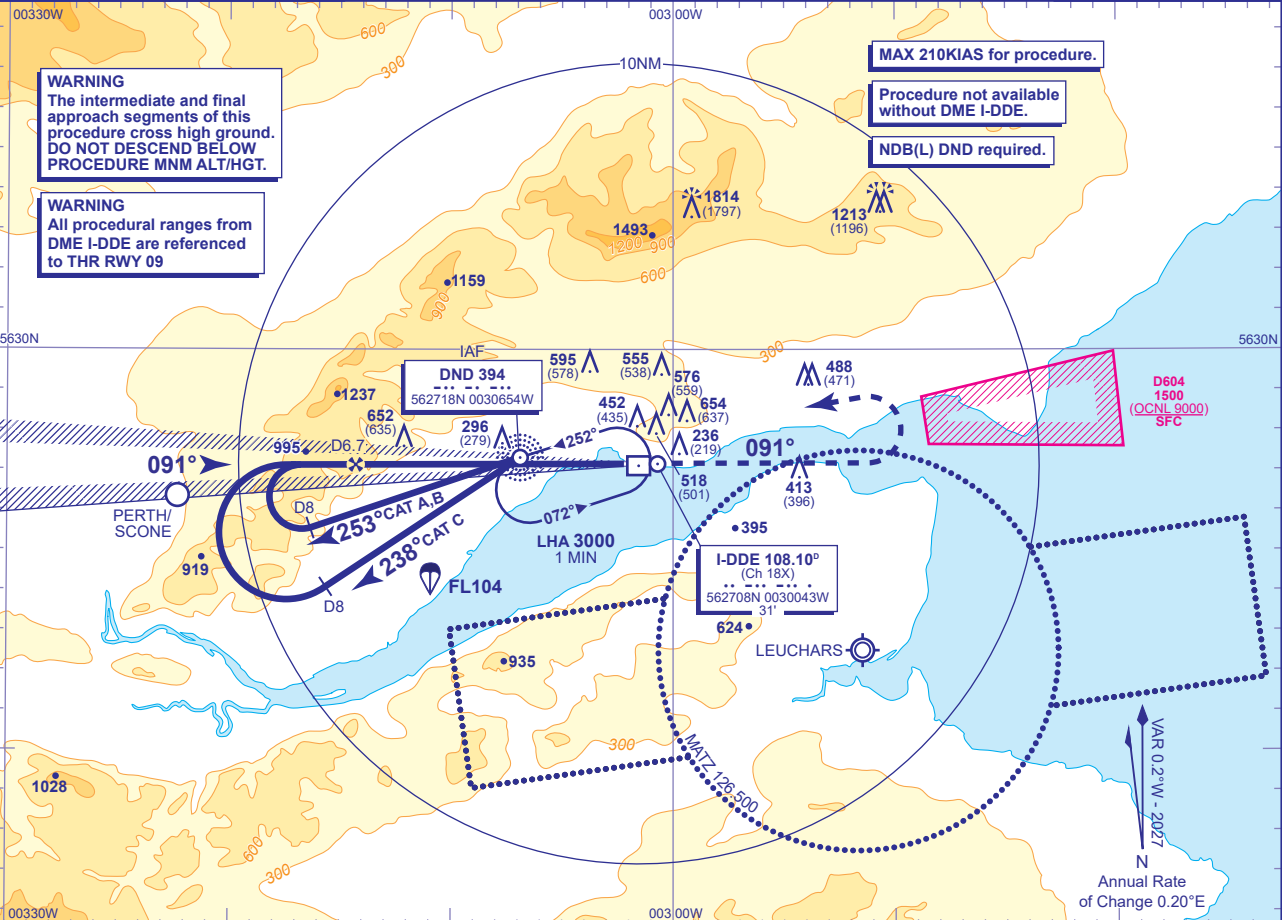
INSTRUMENT APPROACH - ICAO

DUNDEE  
ILS/DME  
RWY 09  
(ACFT CAT A,B,C)



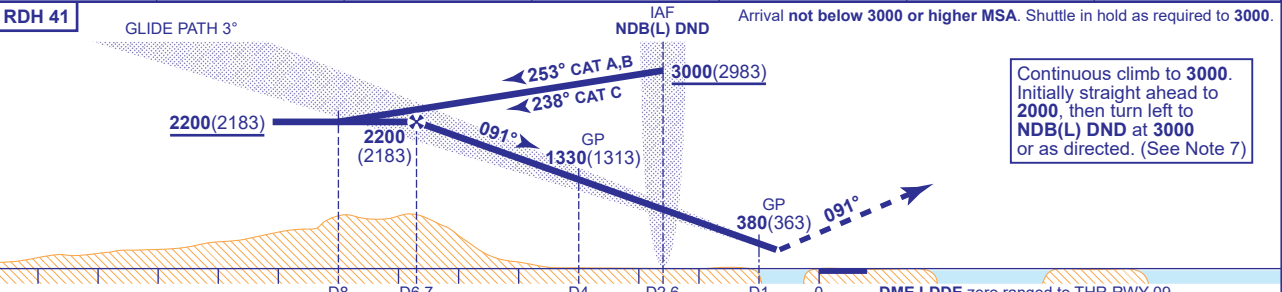
APP	122.905	DUNDEE APPROACH	AD ELEVATION	17
TWR	122.905	DUNDEE TOWER	THR ELEVATION	17
ATIS	119.330	DUNDEE INFORMATION	OBSTACLE ELEVATION	1814 AMSL (1797) (ABOVE THR)
			BEARINGS ARE MAGNETIC	

TRANSITION ALTITUDE  
3000



RECOMMENDED PROFILE GLIDE PATH 3°, 318FT/NM

DME I-DDE	6	5	4	3	2	1
ALT(HGT)	1970(1953)	1650(1633)	1330(1313)	1010(993)	690(673)	380(363)



Aircraft Category	A	B	C	Rate of descent	G/S KT	160	140	120	100	80
OCA (OCH)	CAT I	297(280)	307(290)	317(300)	FT/MIN	850	740	640	530	420
VM(C)OCA (OCH AAL)	Total Area	970(953)	970(953)	1170(1153)						
	South of RWY 09/27	540(523)	750(733)	1080(1063)						

- NOTE 1** Subject to ATC approval, when inbound to NDB(L) DND and within I-DDE DME 10, aircraft may descend to 3000.
- NOTE 2** NDB(L) DND is 2.6NM from THR RWY 09 and is offset 230M north of LOC C/L.
- NOTE 3** The Category C Instrument Approach Procedure infringes the Perth ATZ at 1800FT above Perth aerodrome elevation. Pilots must notify ATC of their intention to conduct a Category C approach on first contact.
- NOTE 4** The eastern edge of the perth ATZ lies 9.5NM west of THR RWY 09. To prevent confliction with possible VFR traffic in the Perth ATZ, pilots should not extend the outbound leg of the base turn beyond the prescribed procedural distances.
- NOTE 5** Due to terrain, LOC and glidepath flag alarms may be experienced at northern edge of coverage when below glidepath sector.
- NOTE 6** Quality of glidepath guidance is not suitable for coupled approaches below 200FT.
- NOTE 7** EGD604 is 7NM east of Dundee ARP. If it appears likely that during the standard missed approach above, low performance aircraft will infringe EGD604 then such aircraft should turn right at I-DDE DME 4 onto track 135°M and climb to 2000(1983) before turning right to return to NDB(L) DND at 3000. Pilots should advise ATC on turning onto 135°M and expect to change to Leuchars Approach when instructed for radar assistance.

CHANGE (4/26): MAG INFO REVISED. MAG HEADINGS.